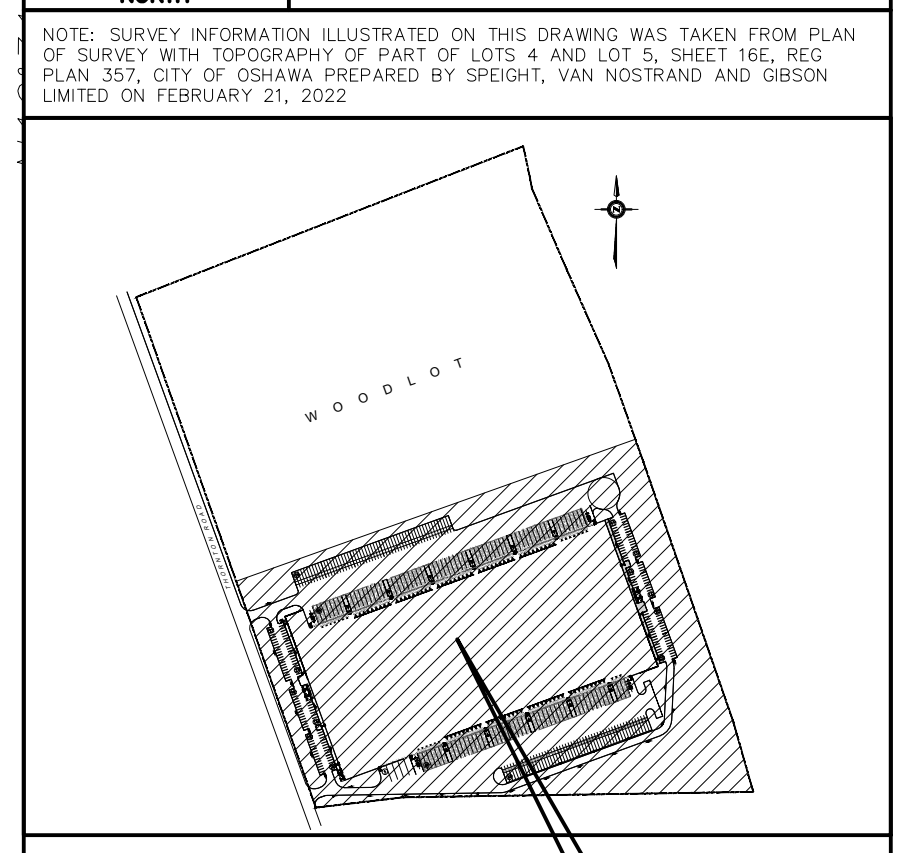
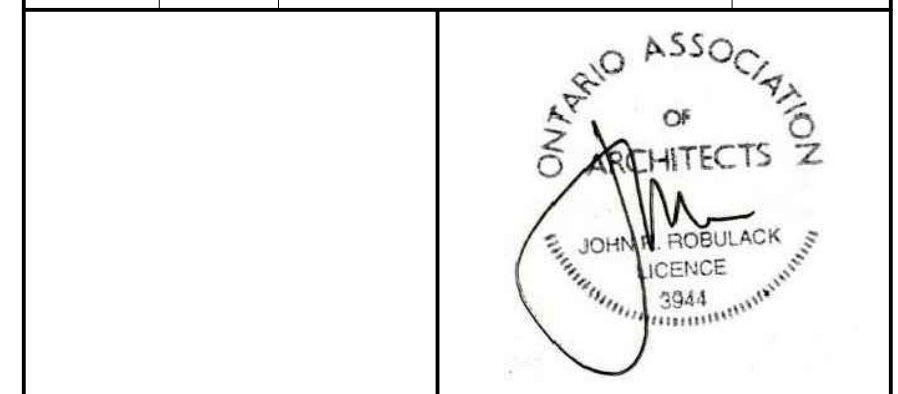


1. VERIFY ALL DIMENSIONS PRIOR TO CONSTRUCTION.
2. DO NOT SCALE DRAWINGS.
3. REPORT ALL DISCOVERIES OF ERRORS, OMISSIONS OR DISCREPANCIES TO THE ARCHITECT OR DESIGN ENGINEER AS APPLICABLE.
4. USE ONLY LATEST REVISED DRAWINGS OR THOSE THAT ARE MARKED "ISSUED FOR CONSTRUCTION".
5. THE DRAWINGS ARE THE PROPERTY OF JRI ARCHITECTS INC. AND MUST BE RETURNED ON COMPLETION OF THE PROJECT. ANY UNAUTHORIZED USE IS PROHIBITED.



NO.	DATE	REVISIONS	APVD BY
14.			
13.	FEB 13/23	ISSUED FOR SITE PLAN APPROVAL#3	
12.	FEB 6/23	ISSUED TO CONSULTANTS	
11.	JAN 26/23	ISSUED FOR COORDINATION	
10.	SEP 2/22	ISSUED FOR SITE PLAN APPROVAL#2	
9.	AUG 24/22	ISSUED FOR COORDINATION	
8.	JUL 18/22	ISSUED FOR COORDINATION	



PANATTONI

185 The West Mall, Suite 860
 Toronto, ON M9C 5L

NEW INDUSTRIAL DEVELOPMENT

1565 THORNTON RD N.
 OSHAWA, ON

ENLARGED SITE PLAN - EXTENT OF WORK

DRAWN: MS
 CHECKED: JR
 SCALE: AS SHOWN
 DATE: FEBRUARY 2023

PROJECT NUMBER: 2021-034
 DRAWING NUMBER: A1.1

NOTES:

FOR LANDSCAPING, REFER TO LANDSCAPE DWGS FOR GRADING AND SERVING, REFER TO CIVIL DWGS

TNPI LOCATION INFO FROM SUE DRAWING PREPARED BY 4040 UTILITY ENGINEERS.

1 A1.1 ENLARGED SITE PLAN - EXTENT OF WORK
 SCALE 1 : 600